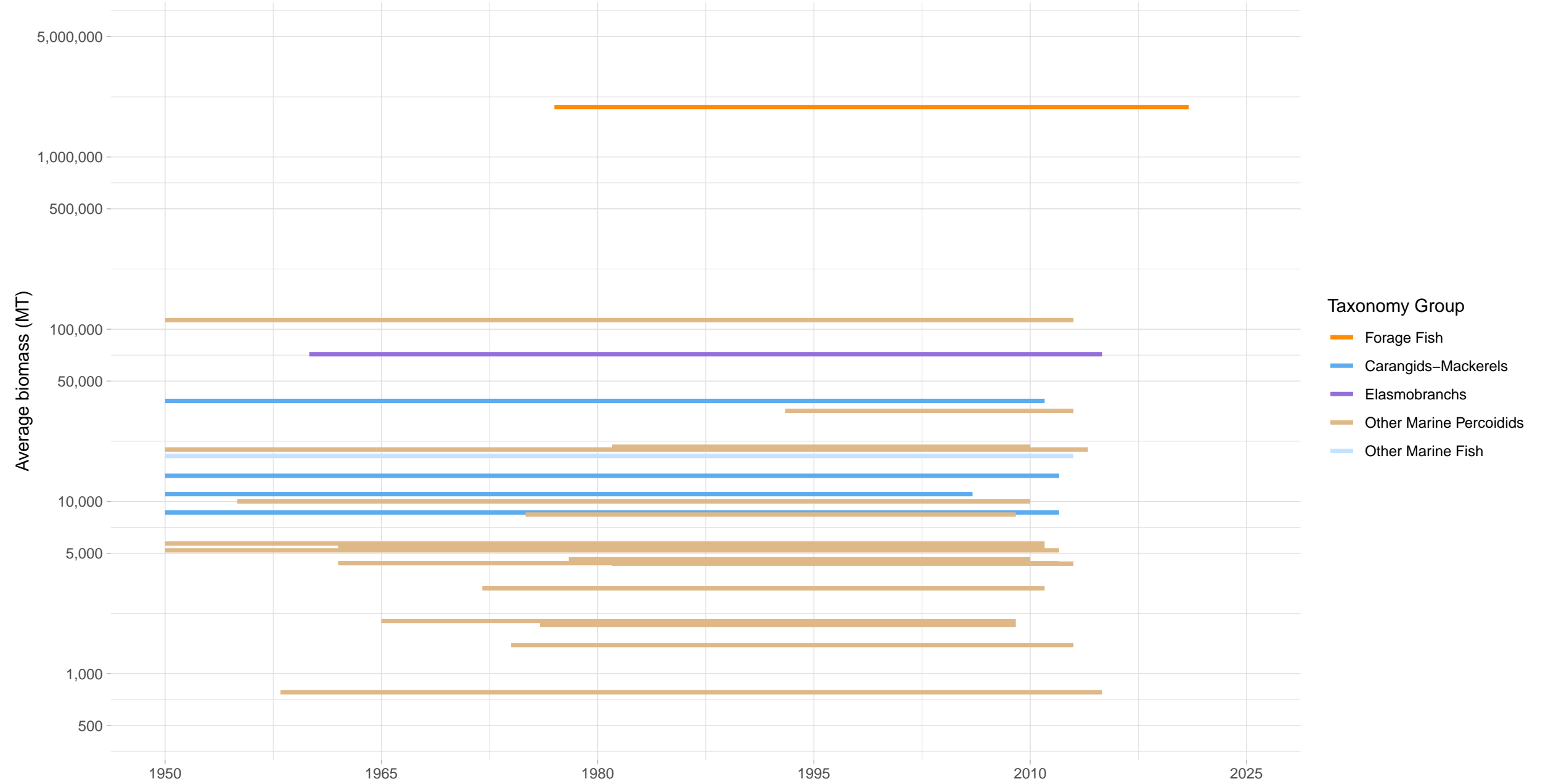
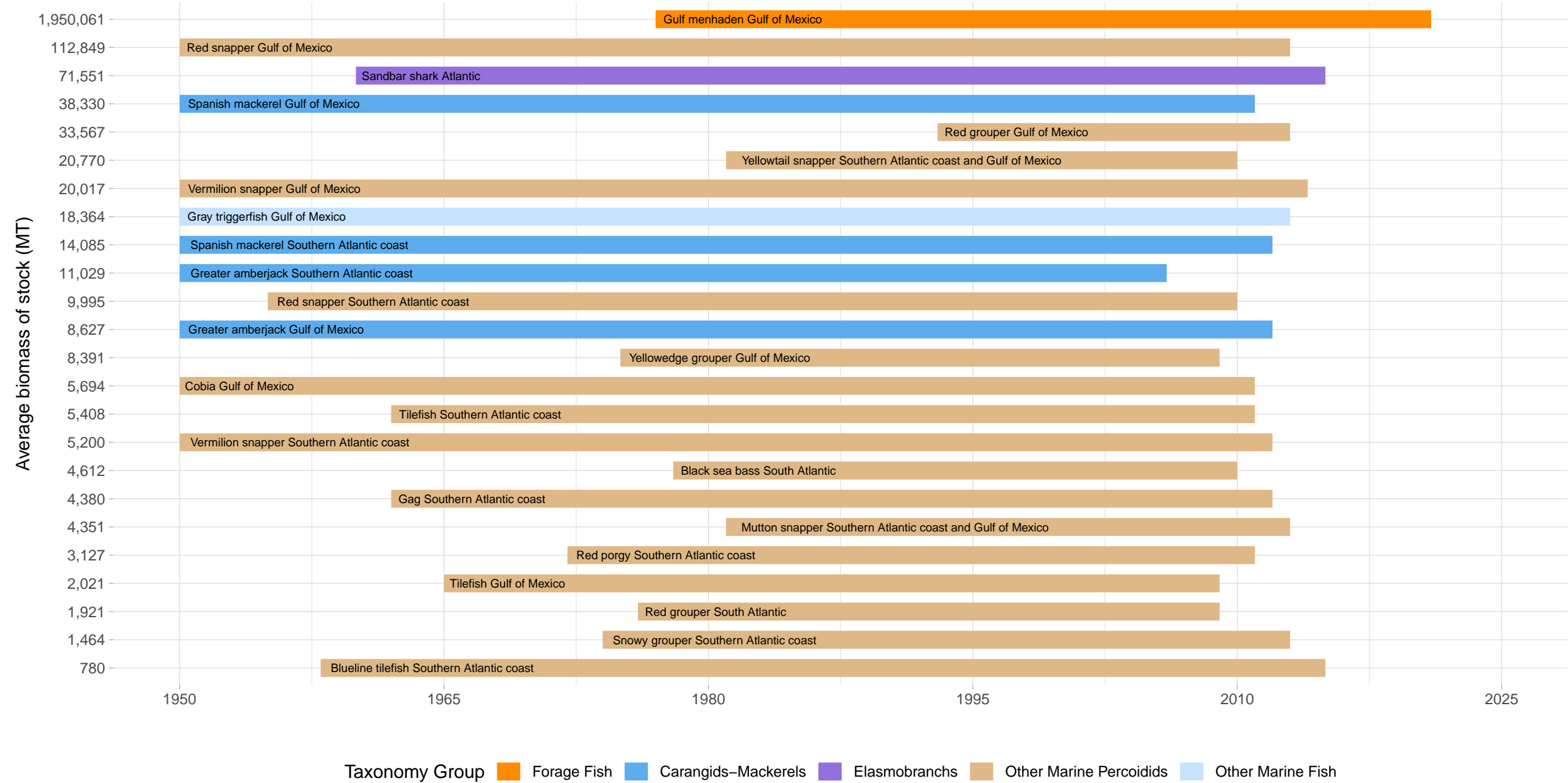


Biomass Coverage in US Southeast and Gulf Region

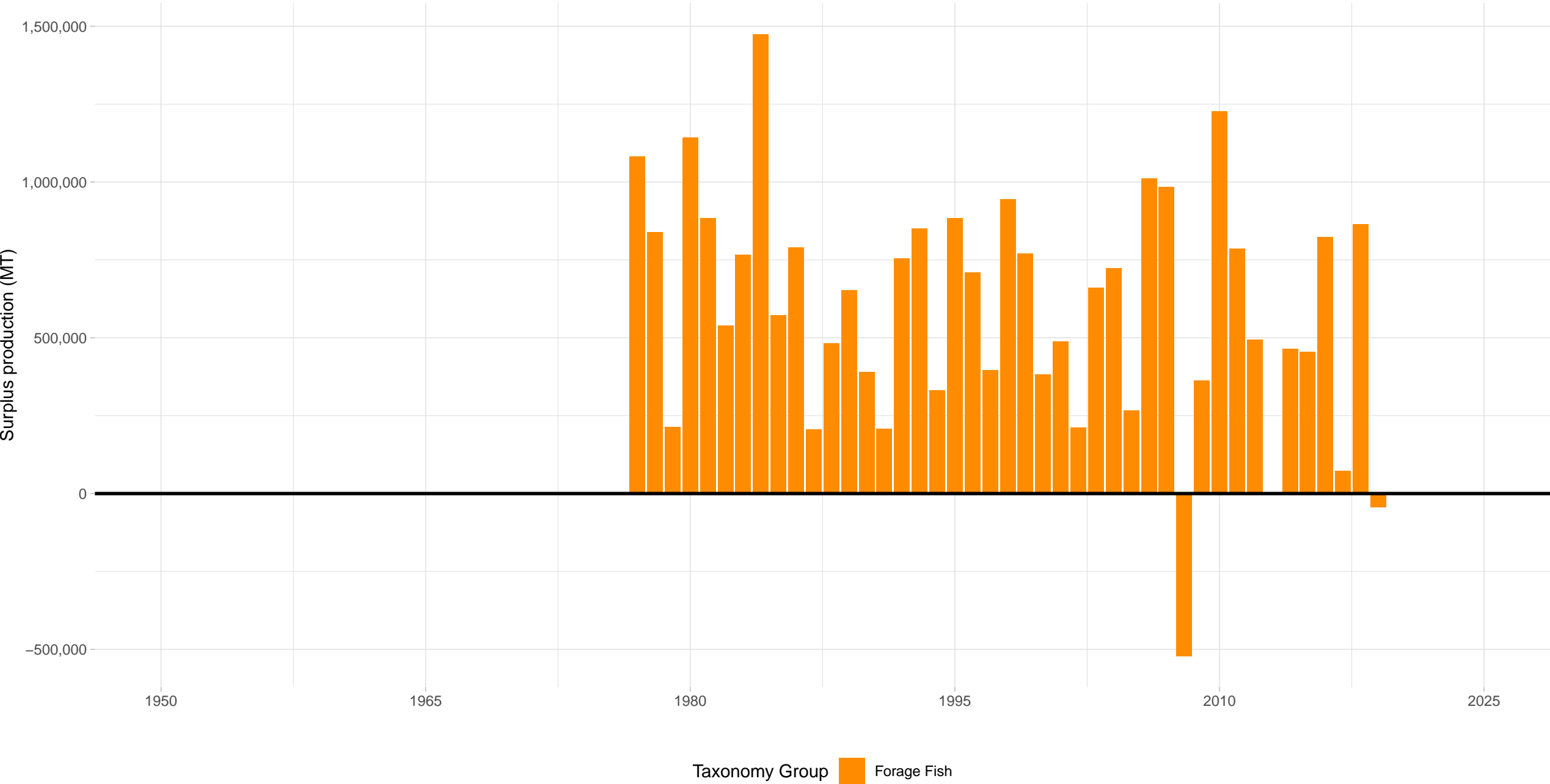


Biomass Coverage Over Time in US Southeast and Gulf Region
Stocks ordered from lowest to highest average biomass



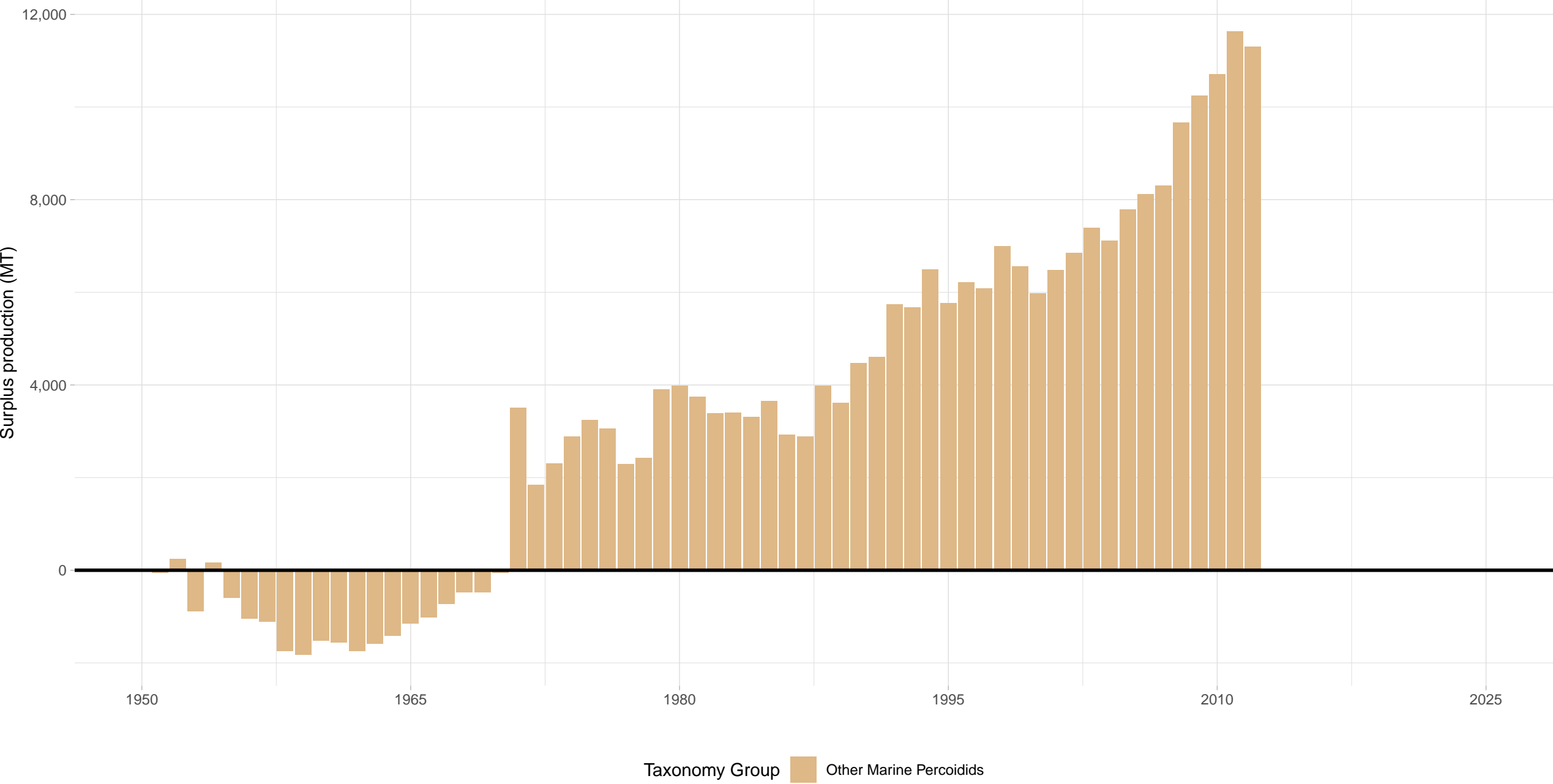
Gulf menhaden Gulf of Mexico – US Southeast and Gulf Region

Stock represents 97% of average absolute surplus production



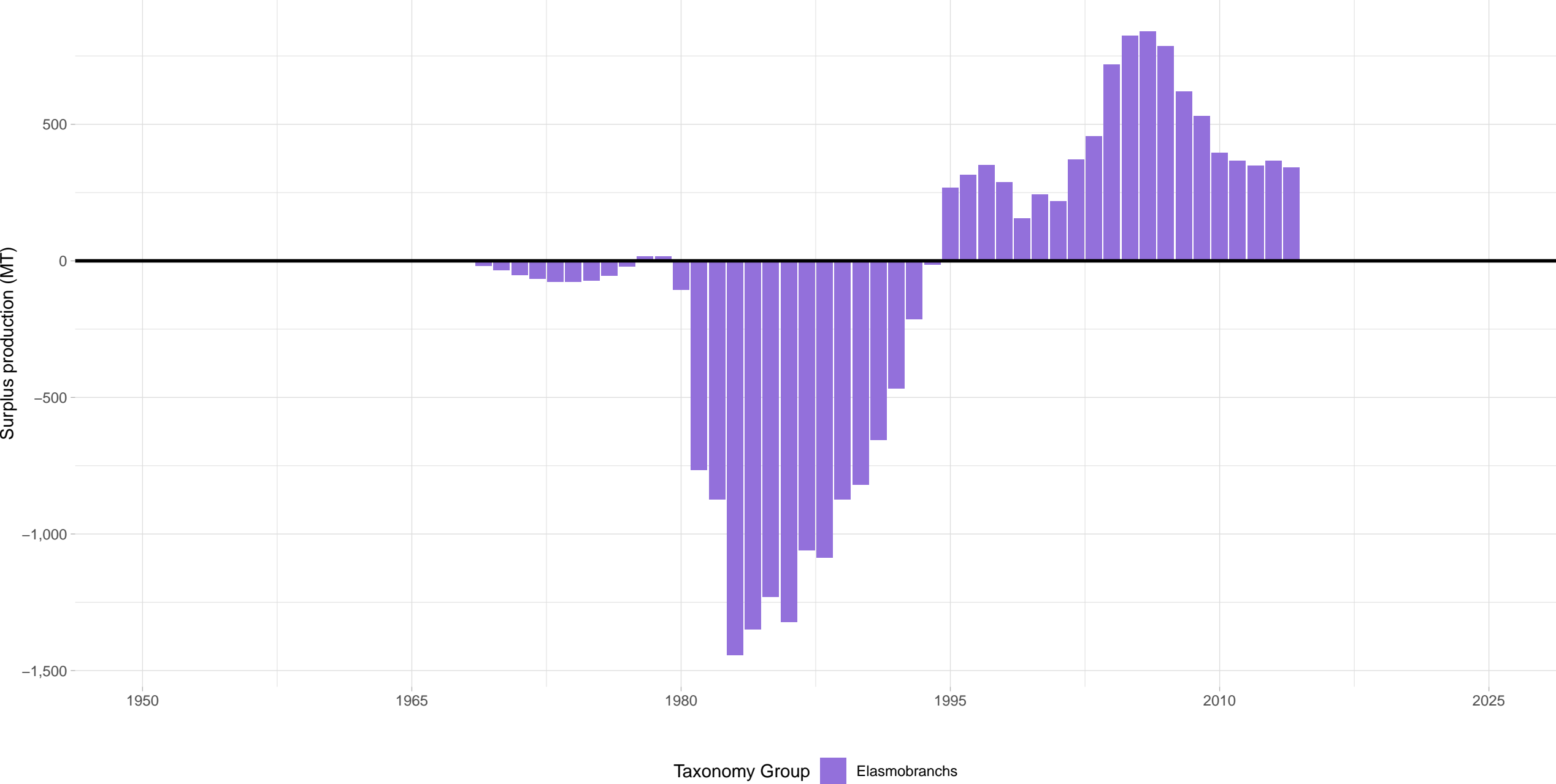
Red snapper Gulf of Mexico – US Southeast and Gulf Region

Stock represents 0% of average absolute surplus production



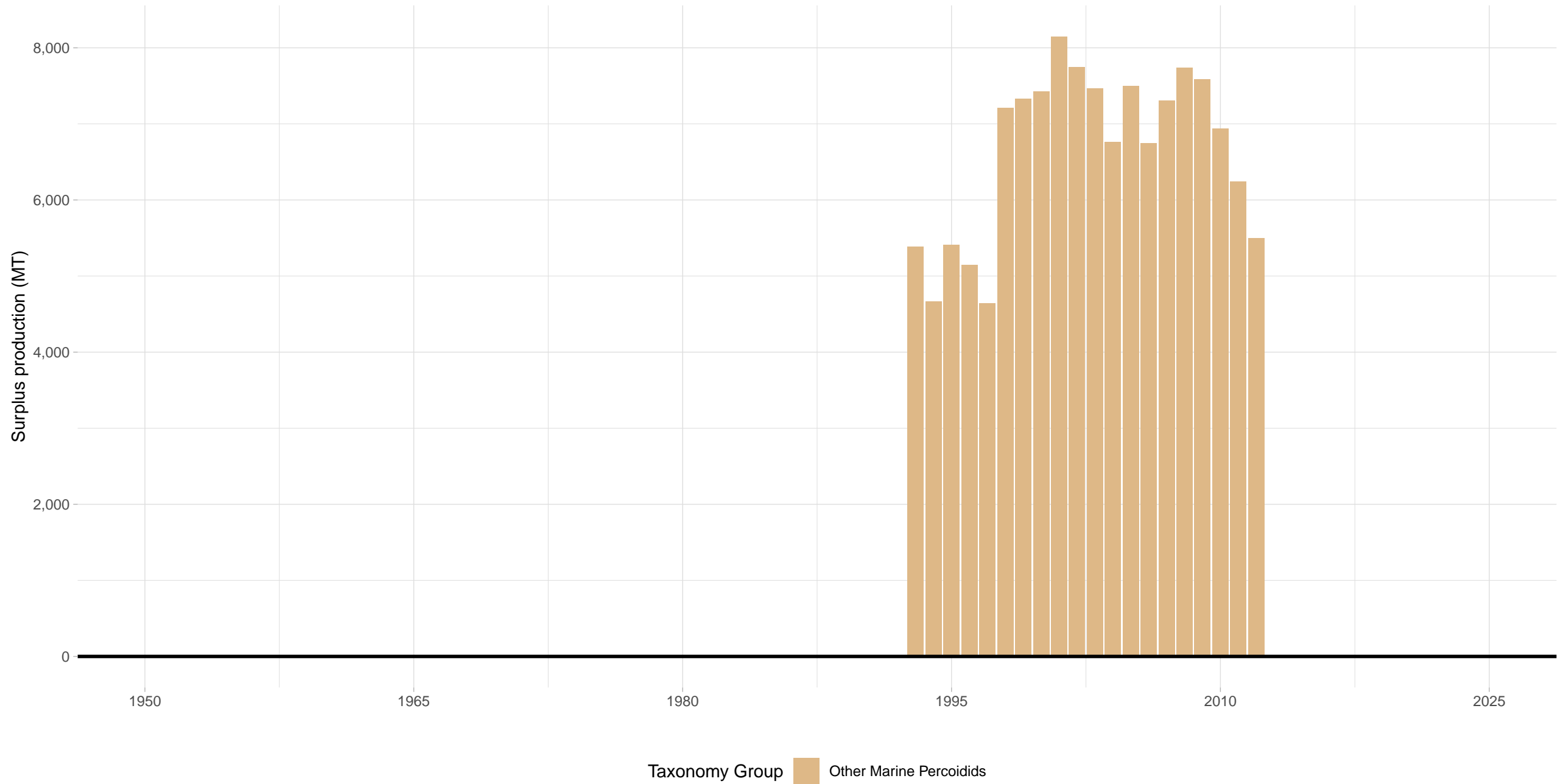
Sandbar shark Atlantic – US Southeast and Gulf Region

Stock represents 0% of average absolute surplus production

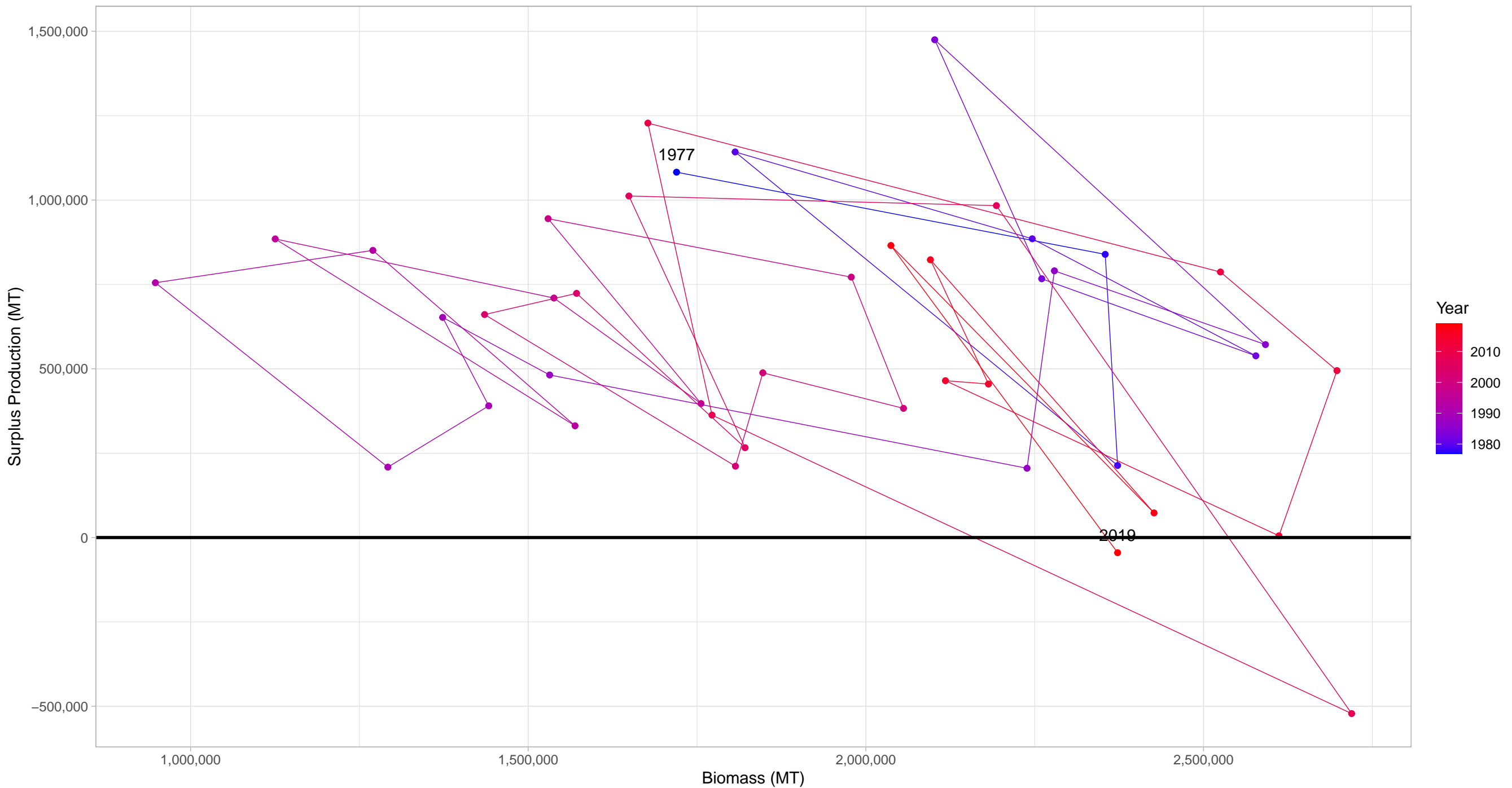


Red grouper Gulf of Mexico – US Southeast and Gulf Region

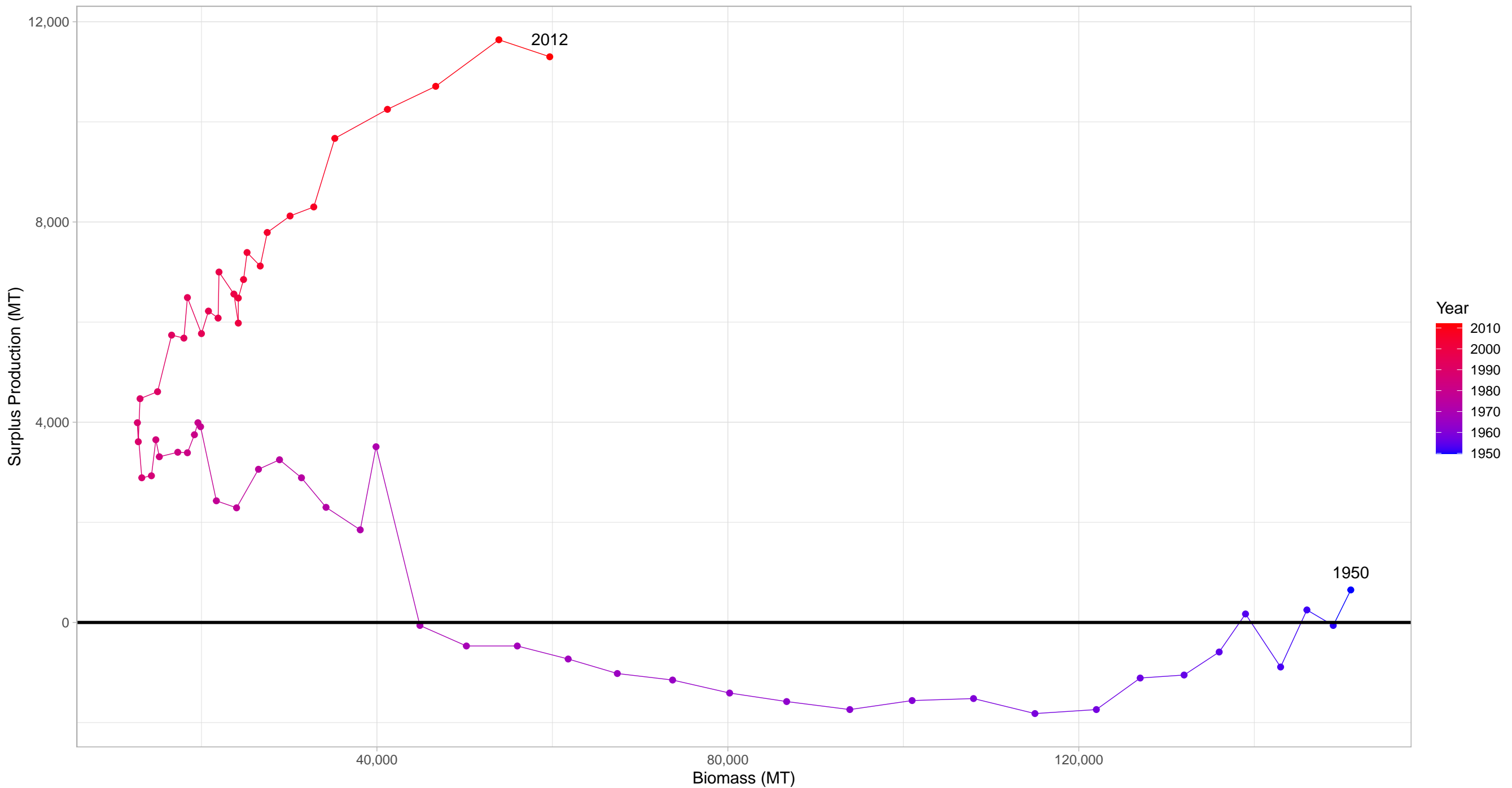
Stock represents 1% of average absolute surplus production



Gulf menhaden Gulf of Mexico in US Southeast and Gulf Region

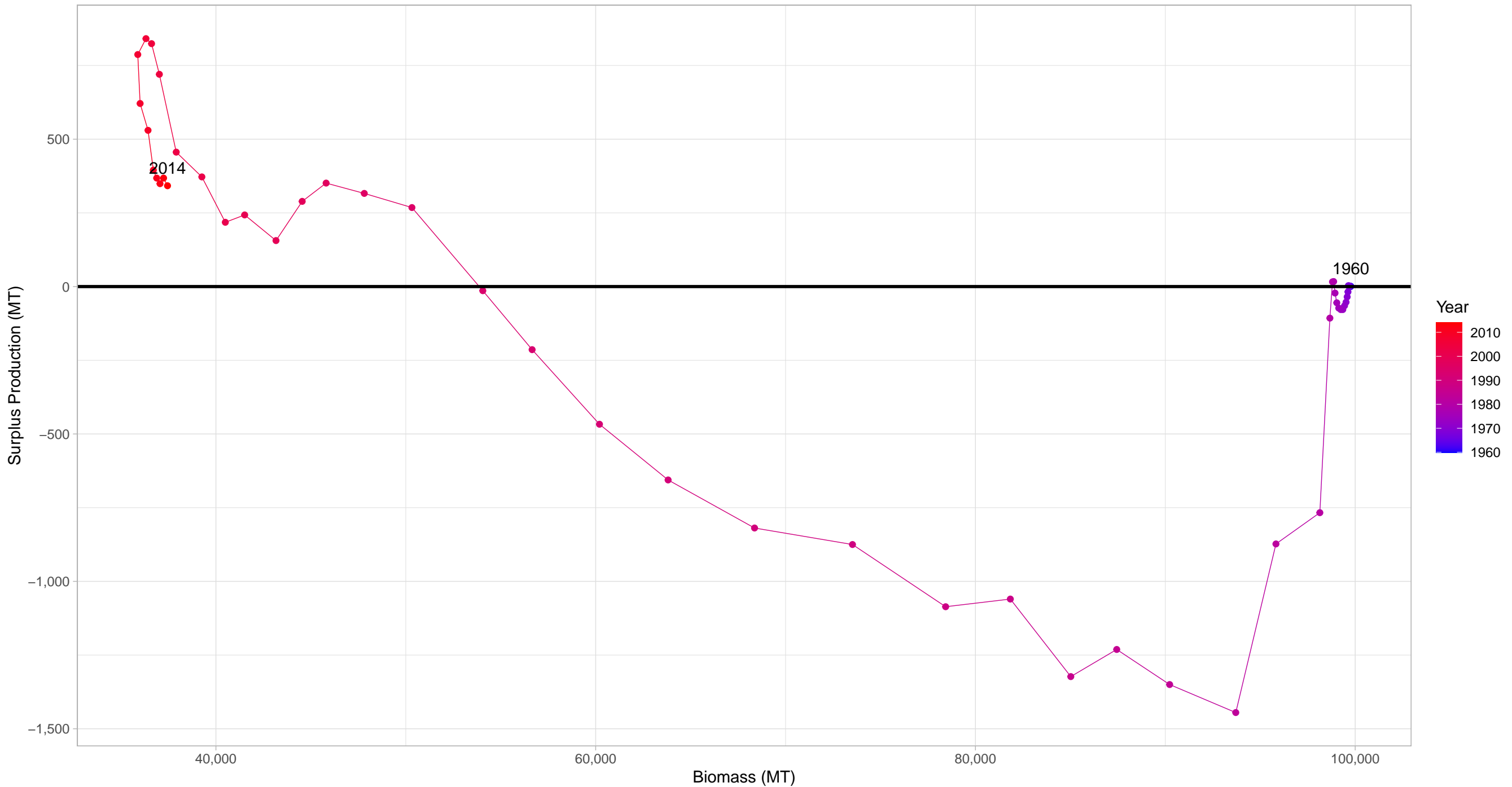


Red snapper Gulf of Mexico in US Southeast and Gulf Region



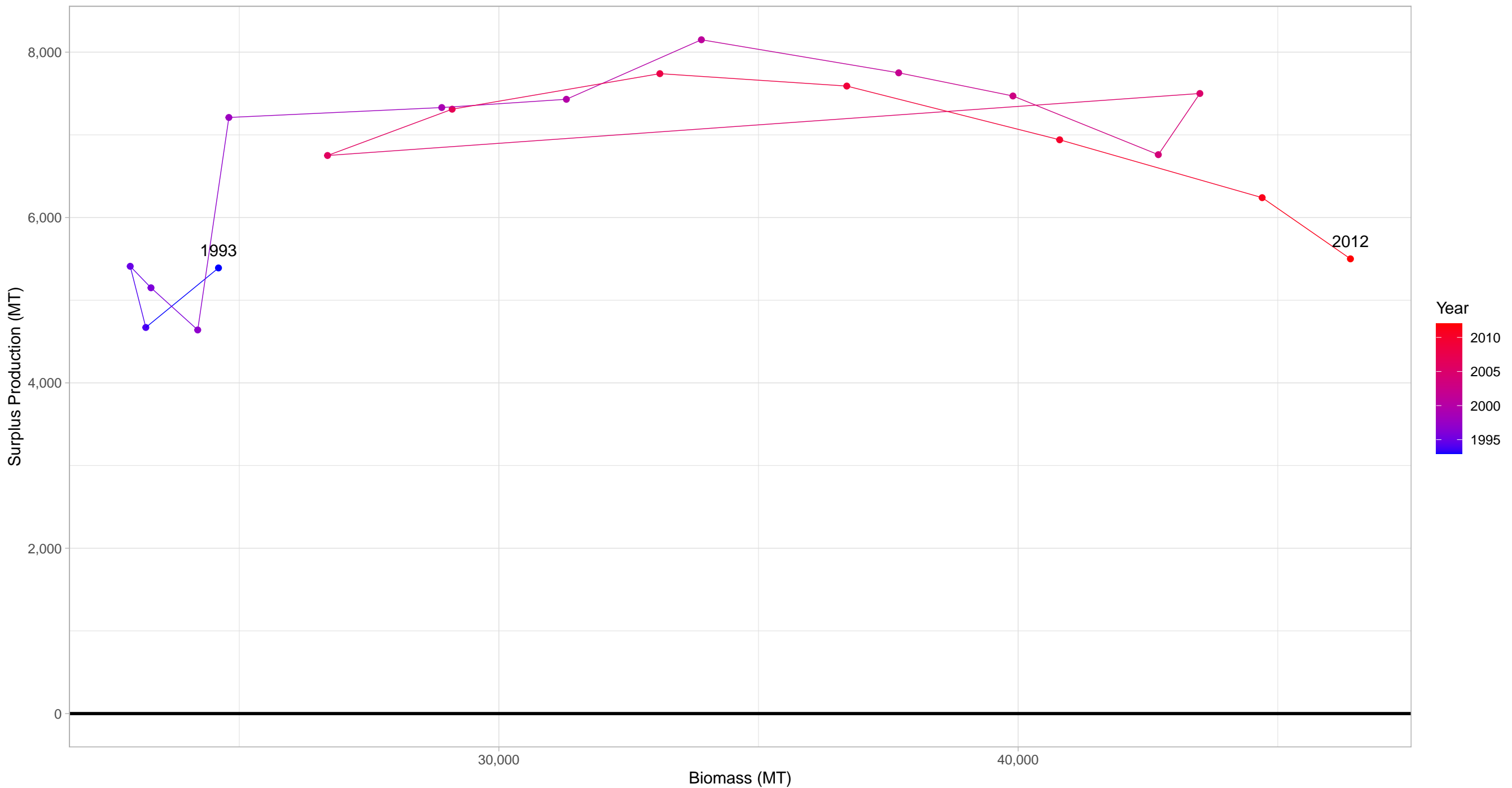
First and last years with recorded surplus production are labeled

Sandbar shark Atlantic in US Southeast and Gulf Region



First and last years with recorded surplus production are labeled

Red grouper Gulf of Mexico in US Southeast and Gulf Region



First and last years with recorded surplus production are labeled